

SIERRA DIFF TYPES

OPTIONS FOR 7" AND 7 1/2" FORD STD. & COSWORTH



**OP :- Std. Open Diff,
Push in Driveshafts.**
(EQUAL SIDE SHAFTS)



| | | | | |
|-----------|-----|-------------------------|------|-------|
| S O R E A | | T68166 | | A B S |
| | | T514 / FOT154 / 166ST86 | | |
| A | 804 | I | 77,5 | |
| B | 28 | J | | |
| C | 114 | K | | |
| D | 26 | | | |
| E | 76 | | | |
| F | | | | |
| G | | | | |
| H | | | | |

The driveshaft splines are the same length both sides. The diff is built with equal side internals to suit.

The Gripper diff is supplied ready to fit, no modifications to the driveshaft are required.

**OB :- Std. OPEN diff,
Bolt on Driveshafts**

(EQUAL SIDE SHAFTS, BUTTONS)



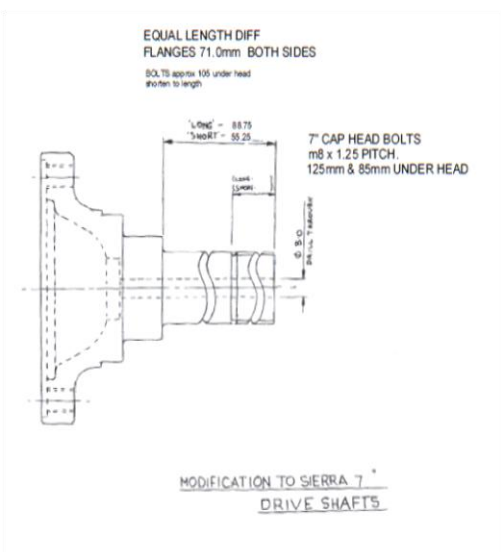
Driveshaft attached to diff with 6 hex bolts.

O.E. side shaft is held into diff with internal fitted circlip. The flange splines are the same length both sides.

To fit the GRIPPER the side shafts must be modified to accept central bolt 'as per VW/Audi/Porsche'

This means drilling a 8mm hole the full length of the shaft and shortening it to suit.

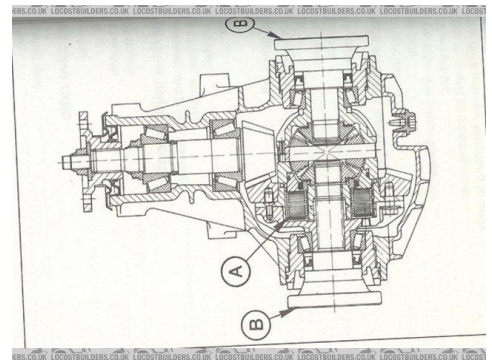
New bolts to fit the side flanges to the diff are supplied with the Gripper LSD.



**VB:- OE Viscous diff,
Bolt on Driveshafts**

(UN-EQUAL SIDE SHAFTS, BUTTONS)

Driveshaft attached to diff with 6 hex bolts.



O.E. side shaft is held into diff with internal fitted circlip. The flange splines are a different length each side.

To fit the GRIPPER the side shafts must be modified to accept central bolt 'as per VW/Audi/Porsche.

This means drilling a 8mm hole the full length of the shaft and shortening it to suit.

New bolts to fit the side flanges to the diff are supplied with the Gripper LSD.

