

Type A :- Gripper Clio JC5 LSD + Adaptor



FITTING THE O.E. CROWNWHEEL

The Original CW is a PRESS FIT to the Original Open Diff.



To re-use the original Crownwheel, this must be pressed off the open diff unit.



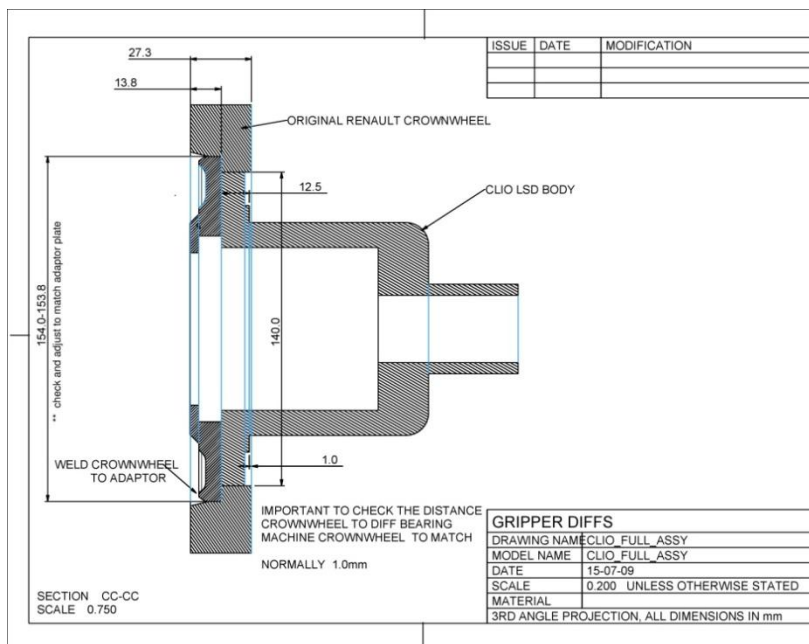
Machined with a step, to accept our Adaptor Plate :-



Gripper LSD supplied with Adaptor Plate, ready for OE CW fitting.



Press Assemble, Clamp tight & Mig weld together



Type B :- Gripper Clio JC5 LSD + CW&P



Gripper LSD supplied with :-

Gripper BOLT-ON CW&P set.



Ratios currently in production :-

$$12/63 = 5.25$$

$$13/60 = 4.61$$

$$13/59 = 4.53$$

$$14/60 = 4.28$$

